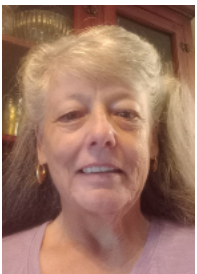


From the Prez



Our show committee for the Guild Show in October has reported that all of the tasks are going smoothly. It is a huge task because we have to work with other societies and it will be a bigger show than normal. I know that a lot of the tasks have been assigned but there are many that are not assigned. Please Call Shirl Stowe and offer your services for the show.

In the last bulletin, for July, there was a picture of the flyer for our guild show. Please print off a few copies and put them, along with a tape dispenser, into your car. Every time you go to your favorite nursery please ask if you can post the flyer on their door or bulletin board. I have been doing this for years for our shows. Without advertising our show and sales will not be well attended by the public.

We need new interest in our favorite plants and it is a good way to invite new interest in our hobby.

Shirl said that she would like for this advertising to begin in August.

We are resurrecting an old activity in September. We are having a members plant sale during the regular meeting. That is a good time to reduce the

UPCOMING EVENTS

AUGUST 15

Regular meetings

Metropolitan Multi-Service Center
1475 West Gray, Houston 77019

SEPTEMBER 19

Regular meetings
& MEMBER PLANT SALE

Metropolitan Multi-Service Center
1475 West Gray, Houston 77019

OCT 13, 14, 15

Southwest Guild Show 2023

Holiday Inn & Suites Conference Center

OCTOBER 17

Regular meetings

Metropolitan Multi-Service Center
1475 West Gray, Houston 77019

Interested in Joining BS/H?

There are two classes of membership:

Individual \$20 per year

Family \$30 per year

All memberships begin with January of the current year.

Visit our website at

www.bromeliadsocietyhouston.org for more information.

INSIDE THIS ISSUE

Upcoming August program	2
Cultural Tips: August 2023	4
Baton Rouge Show June 3rd, 2023	8
What's blooming & other photos!	13
Member musings...	17

(Continued on page 3)



Upcoming August program



Bromeliad enthusiasts to share their experience at Kiwi Brooms in New Zealand!



Presenters:

Gordon Stowe: Introduced to bromeliads in early 2000 by Lindsay Stowe. Now an enthusiast in his own right, serving several terms as Director on the BS/H Board.

Shirl Stowe: Introduced to bromeliads in 2016 by Gordon Stowe, now actively involved with the operations and members of BS/H. She is currently on the Board of Directors as Past President.

Shirl and Gordon love to travel, including visits to gardens, and bromeliad sanctuaries around the world. When 'Kiwi Brooms' was announced, their desire to see New Zealand and to attend the 'Kiwi' conference was more than they could resist. After 2 years of COVID delays, they departed on March 15, 2023. During their 33 day journey, they explored New Zealand's north and south islands, returning home to Houston April 18, 2023. Now, they hope to share a glimpse of the bromeliad beauty they saw and a few of their escapades as well.

Member meeting

**Third Tuesday,
August 15th at 7:00pm.**
Masking preferred.

Zoom will be available - look out for the meeting reminder a few days before the next meeting.

Refreshments

Refreshments duties reserved for members with **last names A-M** please, thank you!

Show & Tell

Bring your plants in-person to show off and talk about them!

Or send photos of your plants to **Gordon Stowe** to show off photos. Let's take a look at them and discuss!

RAFFLE TIME!

Please share a plant or two for the Bromeliad RAFFLE!

Win some plants!



Metropolitan Multi-Service Center
1475 West Gray St., Houston, TX 77019



President’s message continued...*from page 1*

number of the plants that you will have to winter over. It is a good time to remove pups and pick up a second or third pot of the same plant and take it to the meeting for sale. Make sure that the plants are clean, disease free and labeled. Also remember to price your plants. I am

looking forward to this event as it has been years since we had a member sale during the meeting. This is a great way to increase your collection. Participate and have fun.

Well, it has been more than thirty minutes since I went out to the

greenhouse and watered to lower the temperature so I better sign off and stand in the heat and pull the trigger on the garden hose.

Scherie Townes

Previous July meeting raffle results...



DONORS

- Vickey Gurka
- Rick and Carole Richtmyer
- Cherie and Frank Lee
- David and Linda Whipkey
- Chris Goodgame
- Don Green and John Sarkisian
- Malcolm McCorquodale
- Alicia Baker

WINNERS

- Don Green
- Alicia Baker
- Noreen Tolman
- Michael O'Neal
- Troy Merchant
- Vickey Gurka

Total amount of revenue = \$68.00

Cultural Tips: August 2023

FROM RICK & CAROLE RICHTMYER

The Bromeliad Society International book "A Bromeliad Glossary" published originally in 1977 authored by Victoria Padilla and Illustrated by Sue Gardner (Sue Sill) is the source for the information presented below. The Bromeliad Society International has gratefully given permission to reprint portions of the book. Copies of the 3rd edition can be found and purchased on the website <https://www.bsi.org/new/bsi-store/>. This book is an indispensable addition to your bromeliad library. In addition to this book, many other interesting and difficult to find books and back issues of the "Journal Of The Bromeliad Society" can be found for sale at this website.

Definitions From:

A Bromeliad Glossary for August 2023 Cultural Tips

ANTHER – The pollen-bearing part of a flower; the top of the stamen which sheds pollen.

BRACT – A modified leaf associated with the flowering part of a plant involving size and often color.

CALYX – The outermost case of a flower.

COROLLA – The inner circle of floral parts composed of petals.

FLORAL BRACT – The structure just below the flowers, may be leaf-like or colored.

IMBRICATE SCAPE BRACTS – Overlapping, like the shingles of a roof.

INFLORESCENCE – The part of the plant that holds or contains the flower or flower cluster; the mode of the flowering.

MARGINS ENTIRE – Margin not in any way indented; whole. Entire leaves have smooth edges.

MARGINS SERRATE – Saw-edged, toothed like a saw.

OVARY – The part of the pistil which contains the ovules or young seeds.

PEDICEL – The support or stem of a single flower; stem of one flower in a cluster.

PETAL – One of the separate leaves of the corolla.

PISTIL – The ovule-bearing and seed-bearing organ, consisting of ovary, style, and stigma.

RACHIS (RHACHIS) – Axis bearing flowers or leaflets; the central elongated axis of an inflorescence.

REMOTE SCAPE BRACTS – Separated by spaces longer than common.

SCAPE – The stem of the inflorescence usually extending beyond the leaves. It may bear bracts but no foliage leaves and may be one or many-flowered.

SCAPE BRACTS – The structures borne on the scape; may be leaf-like or colored.

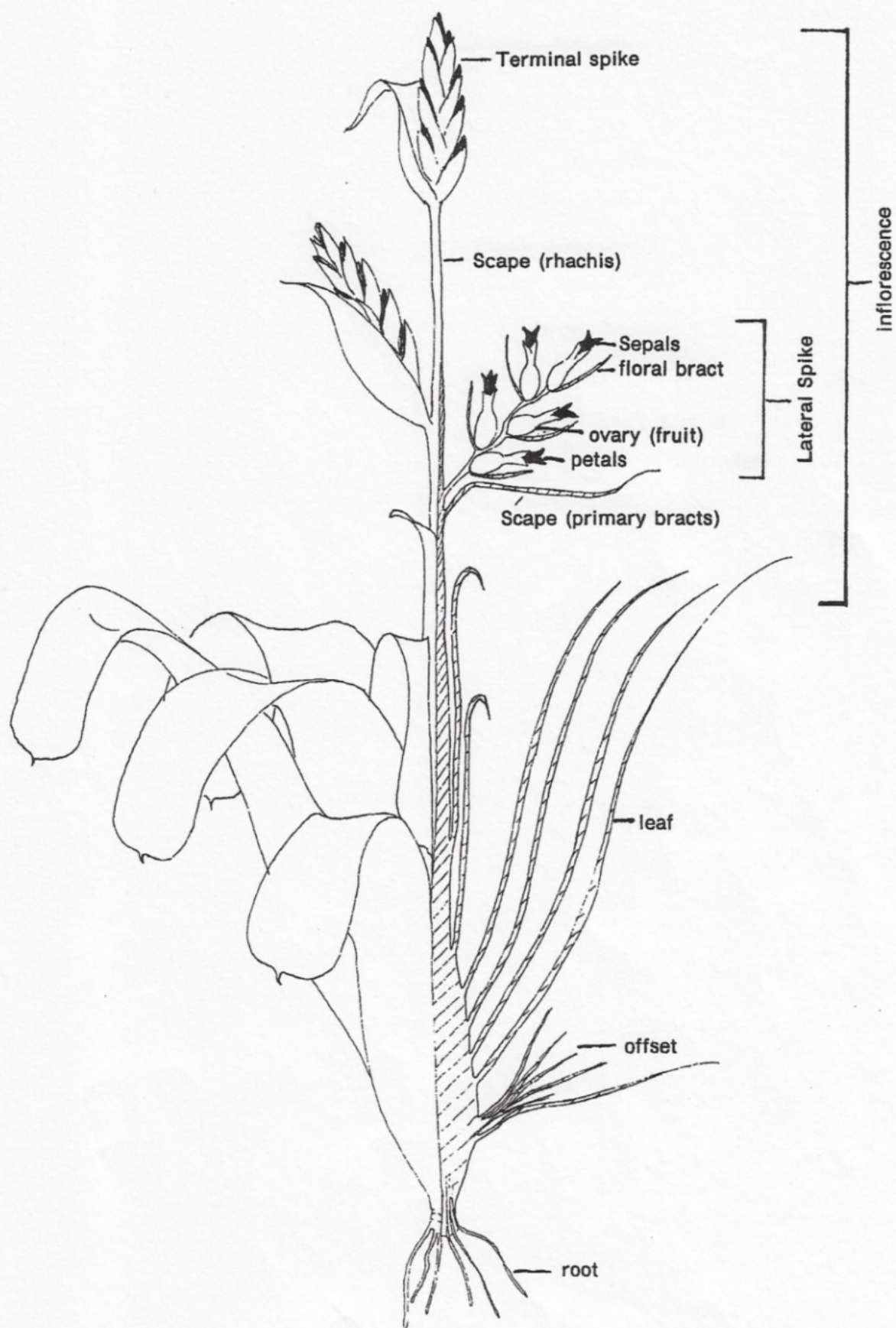
SECUND FLOWERS – One sided; borne along one side of an axis.

SEPAL – One of the separate leaves of a calyx; they are the flower parts which surround or contain the petals.

SESSILE – Attached directly by the base; not stalked. Flower rests directly on the stem.

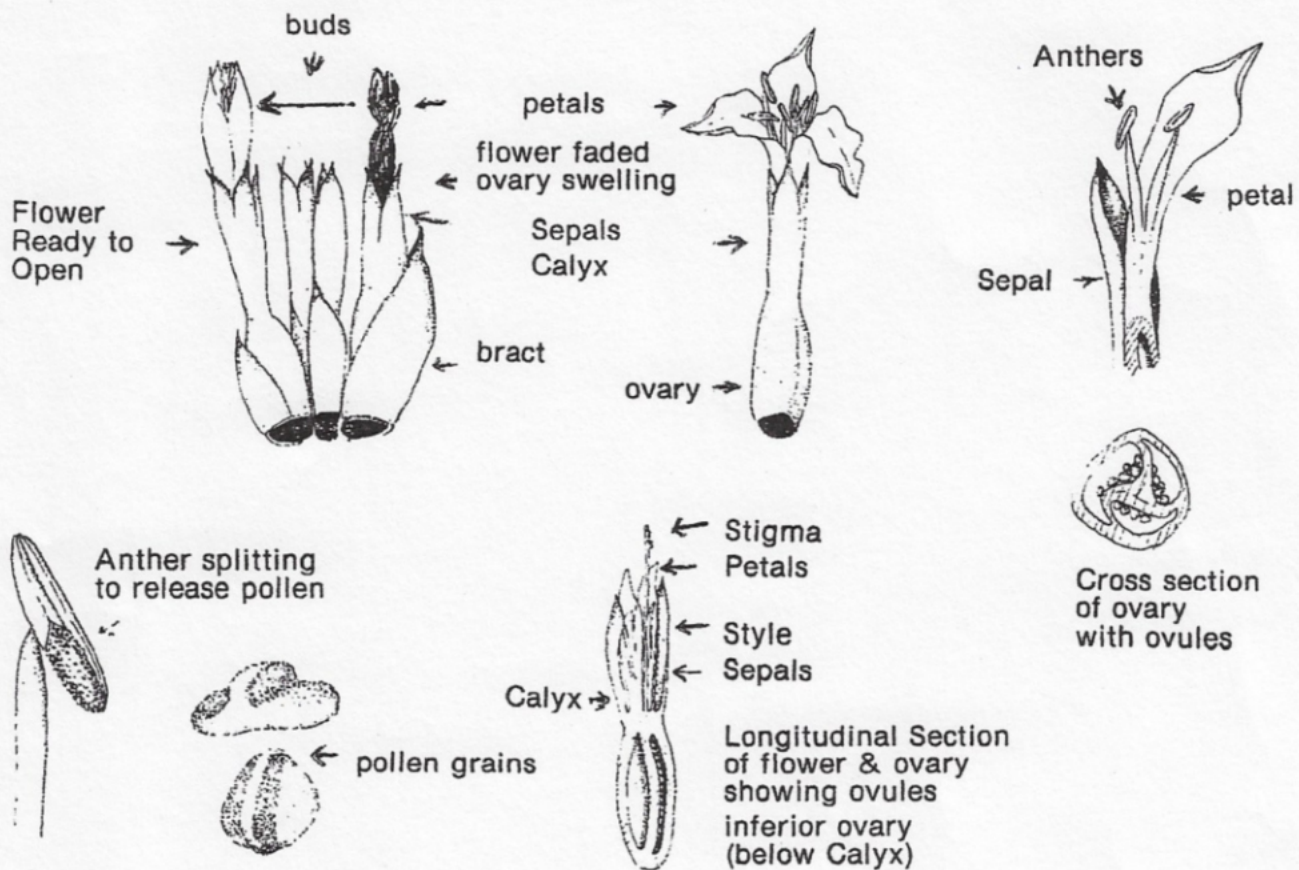
STIGMA – The top of the female portion of a flower which receives pollen from the anther.

STYLE – More or less elongated part of the pistil between the ovary and the stigma.



13

inflorescence—The part of the plant that holds or contains the flower or flower cluster; the mode of flowering.





**Margins
entire**



**Margins
serrate**



**Nectar (Petal)
Scales**



**Stamens
exserted**



**Stamens
included**



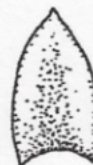
**Sepals
nerved**



**Sepals
carinate**



**Apex
obtuse**



**Apex
acute**



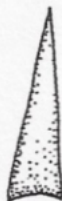
**Apex
acuminate**



**Sepals
connate**



**Sepals
bicarinate**



**Apex
attenuate**



**Scape bracts
inbricate**



**Scape bracts
remote**



**Flowers
secund**



**Flowers
not secund**



**Flowers
pedicellate**



**Flowers
sessile**

Baton Rouge Show June 3rd, 2023

PHOTOS FROM RICK & CAROLE RICHTMYER



Top: Best of Show Horticultural - Mulford Foster Award - entered by Charles Birdsong, *Goudea ospinae gruberi*
Bottom left: Best in Show Artistic - Morris Henry Hobbs Award - entered by Mitch Fontenot, *Orthophytum 'Copper Penny'*
Bottom right: Best of Division I - Individual Specimen Plant Blooming - entered by Mitch Fontenot, *Neoregelia 'Magali' variegated*



Top left: Best of Division II - Individual Plant Foliage - entered by Katie Smith, *Goudea ospinae gruberi*
Right: Best of Division III - Multiple Plants Blooming - entered by Mitch Fontenot, *Hohenbergia leopoldo-horstii*
Bottom left: Best of Division IV - Multiple Plants Foliage - entered by Mitch Fontenot, *Neoregelia 'Zoe'*



Left: Best of Division V - Horticultural Displays Individual Plants - entered by Mitch Fontenot, *Tillandsia xerographica*

Right: Best of Division VI - Horticultural Displays - Multiple Plants - entered by Stephen Buuck, *Tillandsia streptocarpa* var. *Giant*, (Plant top, bloom bottom)



Top left: Best of Division VIII -
Decorative Container - entered by
Mitch Fontenot, *Vriesea corcovadensis*

Top right: Best Cryptanthus Species -
Bob Whitman Award - entered by
Millie Williams - *Cryptanthus*
bivittatus

Bottom: Best Cryptanthus Hybrid -
Warren Loose Award - entered by
Joshua Smith - *Cryptanthus* 'Arctic
Wolf'



Top left: Division II A - Award of Merit - entered by Mark Mese, Vriesea 'Princess Annique', Note from Rick: These are David Shiigi Hawaiian hybrids

Top right: Division II A - Award of Merit - entered by Mark Mese, Vriesea 'White Lighting', Note from Rick: David Shiigi Hawaiian hybrids

Bottom: Head Table - Baton Rouge Bromeliad Society

"The judges at Baton Rouge were Margo Racca, Carole and Rick Richtmyer. Their show was beautiful and full of magnificent entries". - Rick Richtmyer

What's blooming & other photos!

SUBMITTED FROM OUR MEMBERS



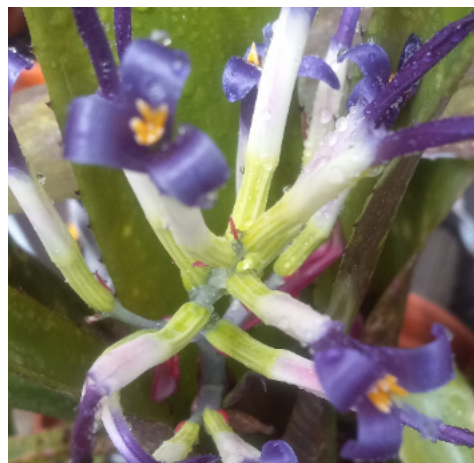
Billbergia 'Purple Haze' from Scherie Townes

Submit your photo!

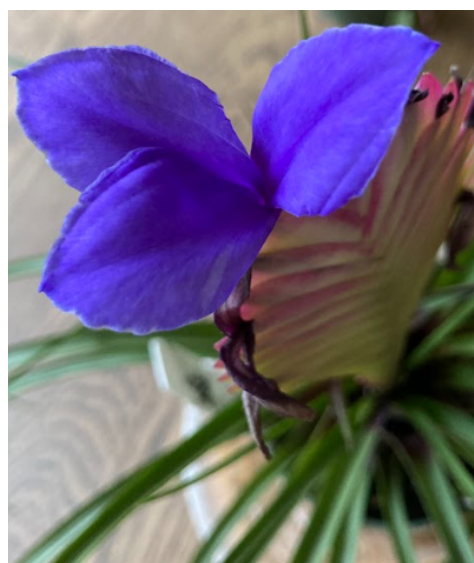
Want to share some of your spectacular broms? Send along high-resolution photos along to bsh.editor@gmail.com before the end of the month for them to be featured in the newsletter.

When sending along your rock-star image, be sure to name your image file for easy identification like the example below:

Plantname_OwnerName.jpg



Bloom close up



Wallisia cyanea - M. Yuen

HOWDY Y'ALL!

SOUTHWEST BROMELIAD GUILD SHOW 2023

OCTOBER 13-15th | HOUSTON, TX



The Bromeliad Society/Houston, Inc. is delighted to announce that we will host the 2023 Southwest Guild Show, International Cryptanthus Society Show and sales **October 13, 14, 15, 2023** at the Holiday Inn & Suites Conference Center NW Willowbrook, 18530 TX-249, Houston, TX 77070.

The BSI Standard Bromeliad Show, Bromeliad Market (Sale), Southwest Guild Fall Meeting, and the Southwest Bromeliad Guild Auction, as well as the Banquet, will be held at the Holiday Inn & Suites Conference Center-NW Willowbrook.

The Holiday Inn & Suites Conference Center room rate is \$97.00/day + tax (Standard King), \$110/day+tax (Standard (2) Queens), \$115/day+tax (King Suite) for any nights of 10/12-10/17. Please register early to secure the limited number of rooms set aside for this room rate. All rooms must be registered before September 30, 2023. Reservation: (281) 612-1850.

To log in on line, cut and past the following link [here](#). When registering, please select "Group Rate" with

Group Code: BSH.

Enter your date of arrival and departure and it will go to the page for our group with the discounted rate.

The Plant Sale will include General Guild Member Sales and Commercial Booths. See Sales Rules. The Sale will be open on Friday evening, October 13 from 6-8PM to the registrants only. Rare plants for the Guild Auction will be appreciated. Contact Gordon Stowe (360) 509 5144.

REGISTRATION: The \$85.00 per person fee includes the right to enter exhibits in the Show, sell in the General Guild Member Sales or the Commercial Sales, the Banquet, the Garden Tour, the Workshops, and the Southwest Guild Auction. Everyone registered by September 20, 2023, will be mailed the Schedule of Events, the Show Schedule with Entry Sheets and Entry Cards (if needed), and any additional information before the Show date. Please reserve early. No reservations will be accepted after September 30 or when the Banquet Room capacity is reached, if this comes earlier.

Registrant Greeting and Show plant entry are Friday, October 13, from 1:00 pm to 5:00 p.m.; Vendor and Member sales setup begins at one as well. A sales fee of 25% will be taken for general sales, or \$100 per table with no percentage charged for commercial sales.

The Southwest Bromeliad Guild, the Cryptanthus Society and the Bromeliad Society/Houston invite you to join us in Houston for a great time with other Bromeliaphiles!

We will need your help with various assignments and duties.

Please contact **Ruby Adams, Don Green, or Shirl Stowe** to volunteer for the event.

KEEP AND EYE OUT FOR MORE IN FUTURE BULLETINS.

REGISTRATION & PAYMENT INFORMATION

Registration Fee: \$85/person

Quick pay for registration before September 20 here through the Zelle app (QR link to the right) or send check payable to Bromeliad Society/Houston or BSH and mail to:

Allyn Pearlman

6422 Bankside Dr., Houston TX 77096

Checks payable to:

Bromeliad Society/Houston or BSH

Subject/Memo: SWGS2023

Send money with Zelle®

Scan in your banking app to send money to pay

BROMELIAD SOCIETY HOUSTON INC

at deliboys@comcast.net



MEMBER REGISTRATION FORM

**42nd BIENNIAL SOUTHWEST BROMELIAD GUILD SHOW
AND INTERNATIONAL CRYPTANTHUS SHOW**
Holiday Inn & Suites Conference Center Northwest-Willowbrook
18530 State Highway 249, Houston, Texas 77070
October 13-15, 2023

NAME: _____ (For Name Tag)

NAME: _____ (For Name Tag)

ADDRESS: _____ PHONE: _____

CITY: _____ STATE: _____ ZIP: _____

E-MAIL: _____

NAME OF SOCIETY: _____ (current membership in a SW Guild affiliate society is required to register. Contact Allyn Pearlman (below) for membership information.)

TOTAL REGISTRANTS: _____ x **\$85.00** Registration fee/person = \$ _____

I plan to bring (Please enter number of plants/entries on blank lines below):

1. _____ Category 1 (horticulture) Plant(s) to enter in Southwest Bromeliad Guild Show
2. _____ Category II and III Plants to enter in the Southwest Bromeliad Guild Show
3. _____ Category 1 (Horticulture) to enter in the International Cryptanthus Show
4. _____ Category II and III Plants to enter in the International Cryptanthus Show.
5. _____ Plants for the General/Member Sales (See **Sales Rules**) All SWBG or Cryptanthus Society Members must have a Sales#. If you do not have a BS/II Sales Number please contact Allyn Pearlman, Plant Sales Chair for a Sales Number. Allyn Pearlman, 713-858-3047; deliboys@comcast.net.
(See SW Guild details @ BSH.org)
5. _____ Plants for the Commercial Booth (See **General Sale Rules & Table Reservation Form**)
6. _____ Plant(s) or Bromeliad related items for the Rare Plant Auction. All donated Plants must be labeled with correct Genus and Species or Hybrid name.

Banquet (Saturday Night) -- indicate your choice of entrée(s) below:

_____ CHICKEN _____ BEEF _____ VEGETARIAN

I'd like to register an additional guest for Banquet only: [] Yes [] No

Name of guest: _____ [] Chicken [] Beef [] Vegetarian
(an additional guest for Banquet-only is \$60, please include this amount when registering a guest for banquet-only.)

Please note any food allergies _____

PLEASE SUBMIT THIS FORM WITH REGISTRATION FEE BEFORE Sept. 20

Online Registration Link: <https://bromeliadsocietyhouston.org/2023-southwest-guild-show-registration-form/>

Or register by mail to: Pearlman, 6422 Bankside Dr., Houston, TX 77096

Make checks payable to: **Bromeliad Society/Houston** (or to **BSH**)

Member musings...



DON'T BE LEFT OUT.

Be part of the "in" crowd. Order your Southwest Guild 2023 Show & Sale T-shirt today. Shirts are only **\$25**.

Shirts can be ordered by calling or emailing Allyn Pearlman - 713-858-3047, deliboy@comcast.net

Orders need to be placed by September 20th.

**Cash or check only* No credit card orders.*

Looking for contributors

Interested in writing for the BSH Bulletin?

We are looking for passionate plant lovers who are interested in sharing their wisdom.

Please also send over any communications you would love to share - announcements, classifieds, etc.



Follow us at

@bromeliadsocietyhouston

Please follow our adventures and keep up with news on our **Instagram** page!



SEPTEMBER MEMBER PLANT SALE

Fall into Tropicals: September Plant Sale! Embrace the season of growth and transform your spaces with our diverse selection of vibrant plants from our members! Don't miss out on this botanical bonanza!

NEW BOOK ALERT!

From Dennis Cathcart!

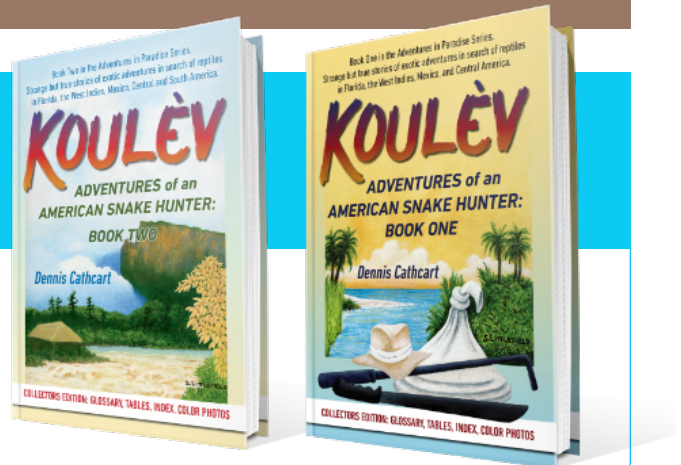
Koulèv: Adventures of an American Snake Hunter, Book One

440 pages.
140 photos and maps
124 chapters
Reading Guide, Glossary, Index, Reference Tables

Koulèv: Adventures of an American Snake Hunter, Book Two

472 pages.
229 photos and maps
119 chapters
Glossary, Index, Reference Tables

Cost of both Koulèv: Adventures of an American Snake Hunter, Book One and Book Two, are the same.



Professional Edition: Softcover, Color Photos, \$35.00

Collector Edition: Hardcover, Color Photos, \$48.00

Black and White Edition: Softcover, B&W photos, no index or tables, \$18.00

Please email: deliboys@comcast.net and specify which book you want to purchase.

Bromeliad Society HOUSTON Inc.



Our August birthdays...

Happy Birthday to...

Joe Sandel

Gordon Rowell

Vicki Pinak

Joanne Woolsey

Scherie Townes



Interested in Joining BS/H?

There are two classes of membership:

Individual \$20 per year

Family \$30 per year

All memberships begin with January of the current year. Visit our website at www.bromeliadsocietyhouston.org for more information.

SAVE THE DATES

Aug 15 **Regular member meeting**
Metropolitan Multi-service center
1475 West Gray, Houston, 77019

Sept 19 **Regular member meeting**
Metropolitan Multi-service center
1475 West Gray, Houston, 77019

There will be a member plant sale at this meeting. Come by to pick up new plants for your collection!

Oct 17 **Regular member meeting**
Metropolitan Multi-service center
1475 West Gray, Houston, 77019

Oct 13-15 **2023 Southwest Guild Show**
Holiday Inn & Suites
Conference Center
NW Willowbrook,
18530 TX-249
Houston, TX 77070

Nov 16 **Board meeting**
7:30pm (zoom only)

Nov 21 **Regular member meeting**
Metropolitan Multi-service center
1475 West Gray, Houston, 77019

Dec 02 Holiday Party

2024

May 03-05 **BS/H Annual Show & Sale**



Note: This calendar page looks a bit different this year. Trying something a bit different. Check this page out for any updates or changes through the year on the bulletin.

2023 Officers and Chairmen

President	Secretary	Past President
Scherie Townes	David Whipkey	Shirl Stowe
Vice President	Treasurer	
Michael O'Neal	Allyn Pearlman	

Board of Directors

Through 2023	Through 2024	Through 2025
Alicia Baker	Gordon Stowe	Frank Lee
John Schmidt	Melenie Yuen	Linda Whipkey

Standing Committees

Publications	Programs Chairman
Allyn Pearlman	Michael O'Neal
Bulletin Editor	Standing Committees Ex-Officio
Melenie Yuen, bsh.editor@gmail.com	Shirl Stowe
Plant Sales Chairman	Cherie Lee
Allyn Pearlman	

Committees of the Board of Representatives

Annual Show	Hospitality Coordinator
David Whipkey	Shirl Stowe
Bromeliad Culture	Members & Visitors Register
Rick & Carole Richtmyer	Noreen Tolman
Courtesy	Membership
Midge Gorman	Allyn Pearlman
Directory	Seedlings
Mary Cinotto	Allyn Pearlman
Email Communications	Show & Tell
Mary Cinotto	John Schmidt & Gordon Stowe
Garden Tours	Raffle Plants
Gordon Stowe, Shirl Stowe	Frank & Cherie Lee
Historian	Virtual Communications (zoom)
David Whipkey	Mike O'Neal
Holiday Party Chairman	
Allyn Pearlman	

Bromeliad Society International

Annette Dominguez	Cherie Lee	Daniel Wolf
-------------------	------------	-------------

Southwest Bromeliad Guild

Don Green	Shirl Stowe
-----------	-------------

BS/H membership

There are two classes of membership:

Individual	\$20 per year
Family	\$30 per year

All memberships begin with January of the current year.
Visit our website at www.bromeliadsocietyhouston.org for more information.

Please send your check to:

Allyn Pearlman
6422 Bankside Drive
Houston, TX 77096

Cryptanthus Society membership

There are two classes of membership:

Individual	\$20 per year
Family	\$25 per year

Please send your check to:

Carole Richtmyer
18814 Cypress Mountain Dr.
Spring, TX 77388



We have a large selection of Aechmea, Billbergia, Cryptanthus, Dyckia, Neoregelia, and Tillandsia. Please compare our prices and our quality.

15019 8th Street West, Santa Fe, TX 77517 ■ 409-925-6933

www.jimbosnursery.com



Houston Orchid Society

www.houstonorchidsociety.org

Regular meeting first Thursday of month at 7:30 PM
First Christian Church | 1601 Sunset Blvd



Texas Gulf Coast Fern Society

www.tgcfersoc.org

Regular meeting third Sunday of month at 2:00 PM
Judson Robinson Jr. Community Center
2020 Hermann Drive., Houston, TX 77004

ABOUT THIS NEWSLETTER...

The Bulletin is published monthly and is available online prior to monthly meetings. Articles and any other information pertinent to bromeliads are solicited. Articles may be reprinted with proper acknowledgment given to author and publication.

Please have articles to the bsh.editor@gmail.com before the end of the preceding month. An electronic Yearbook is published annually based on the membership roll at the end of the regular February meeting of each year and distributed to members of the BS/H, Inc. Periodic electronic updates may also be distributed during the year. Please address any correspondence regarding this publication to: bsh.editor@gmail.com



BROMELIAD SOCIETY/ HOUSTON INC.

This corporation is organized exclusively for purely public charity and strictly educational purposes. Specific goals of the Society shall be to: Increase knowledge of bromeliads through interchange and dissemination of information. Use such funds as are available for the purpose of research and/or equipment in institutions of higher learning within the State of Texas.



Affiliated with the
Bromeliad Society
International



Member of
Southwest Bromeliad
Guild



Affiliated with the
Cryptanthus Society
International

ON THE BACK COVER...

Did you beat the heat? Navigating the heatwave entails not only caring for ourselves but also tending to our leafy companions. Ensure plants receive ample water and shade, nurturing nature's resilience amidst soaring temperatures.

I think our backyard garden dream is going to look more like a desert garden option at this rate!

If you'd like to join in and contribute any photos, a written column, or ideas for improvement, please send along your thoughts and feedback (with a ton of gentle reminders please) to bsh.editor@gmail.com.

